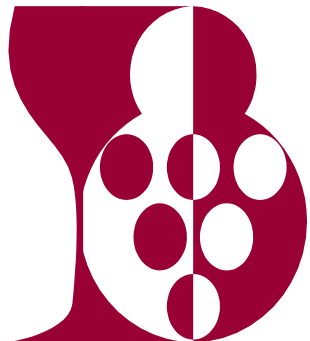


Chenin blanc Wine Style Research

DrHélène Nieuwoudt

Stellenbosch University



Chenin blanc Conference, Stellenbosch,
14 November 2011



How can science help the industry?

Regarding our knowledge and understanding of SA Chenin

Sensory profiles

?

SA Consumer point of view

?

Chemical profile

?

Chenin blanc team @ su



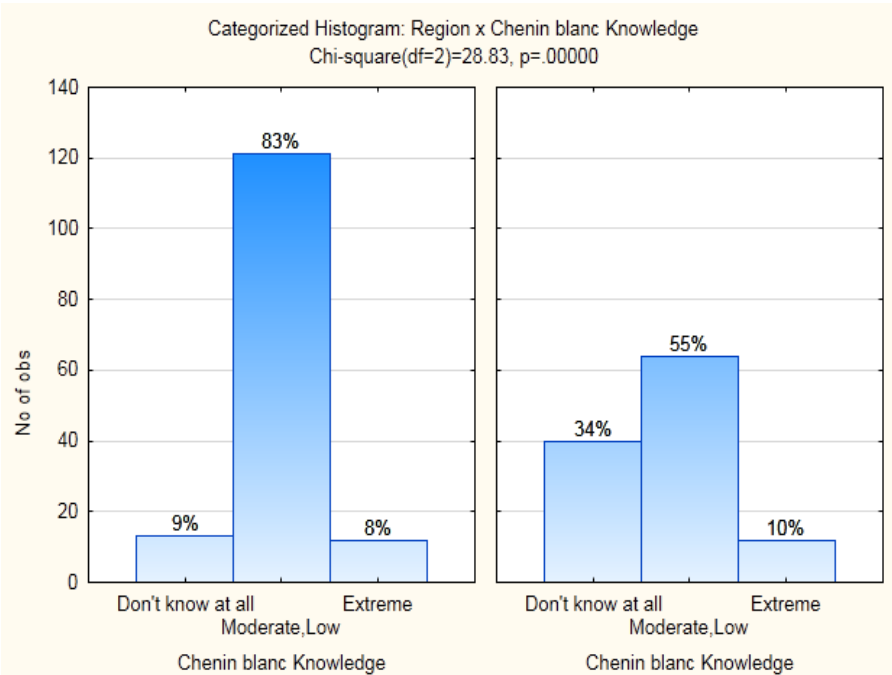
Task 1: Consumer-perception analysis

Question: What is the consumers' knowledge level and experience of Chenin blanc wine styles?

- Survey:
 - 6 Open-end questions Associative group analysis technique (Szalay, 1970)
 - “When **xxx** is mentioned, what comes to mind?”
Cultivar, Chenin blanc, bush vines, NLH, SLH wines
- Two wine shows:
 - JHB Wine Fair 2010 (122 consumers)
 - Robertson Wine Fair 2010 (152 consumers)
- 5261 responses captured, categorised and scored

Consumers... perceptions on Chenin blanc Wine Style & Knowledge

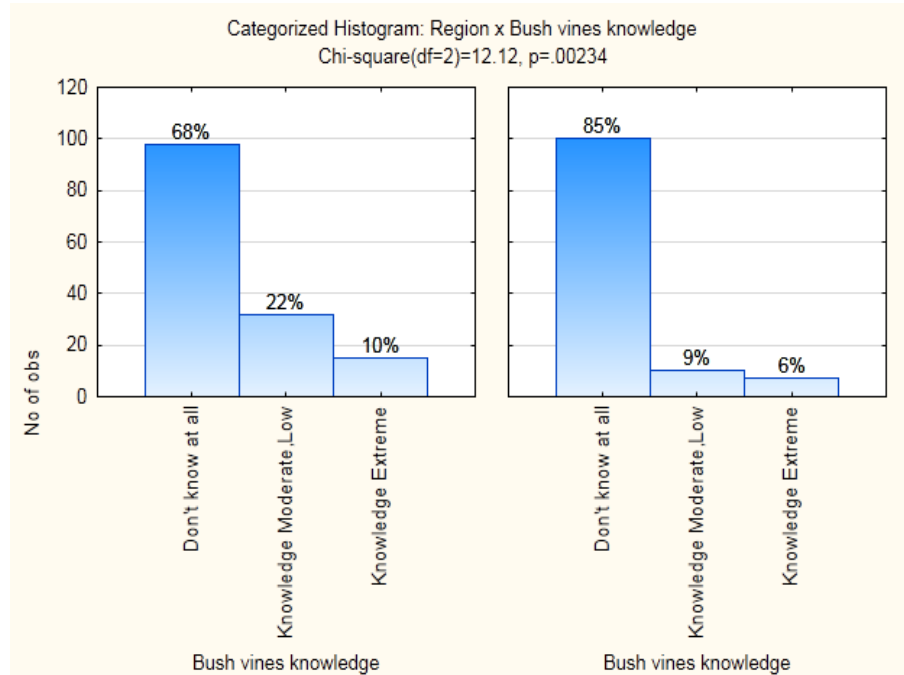
Chenin blanc wine styles



Robertson Wine Fair

JHB Wine Fair

Bush Vines



Robertson Wine Fair

JHB Wine Fair

Consumers... Chenin blanc is not clear in their minds

Acknowledgements

- Post graduate students
- US Colleagues
- Chenin Blanc Association
- The QDA tasting panel
- Winemakers
- Private Cellars
- Winetech IWBT-W 10/01
- NRF

*Investigating the correlation between chemical, sensory and consumer preferences of selected South African wines:
Implementation of novel software IWBT-W 10/01*

